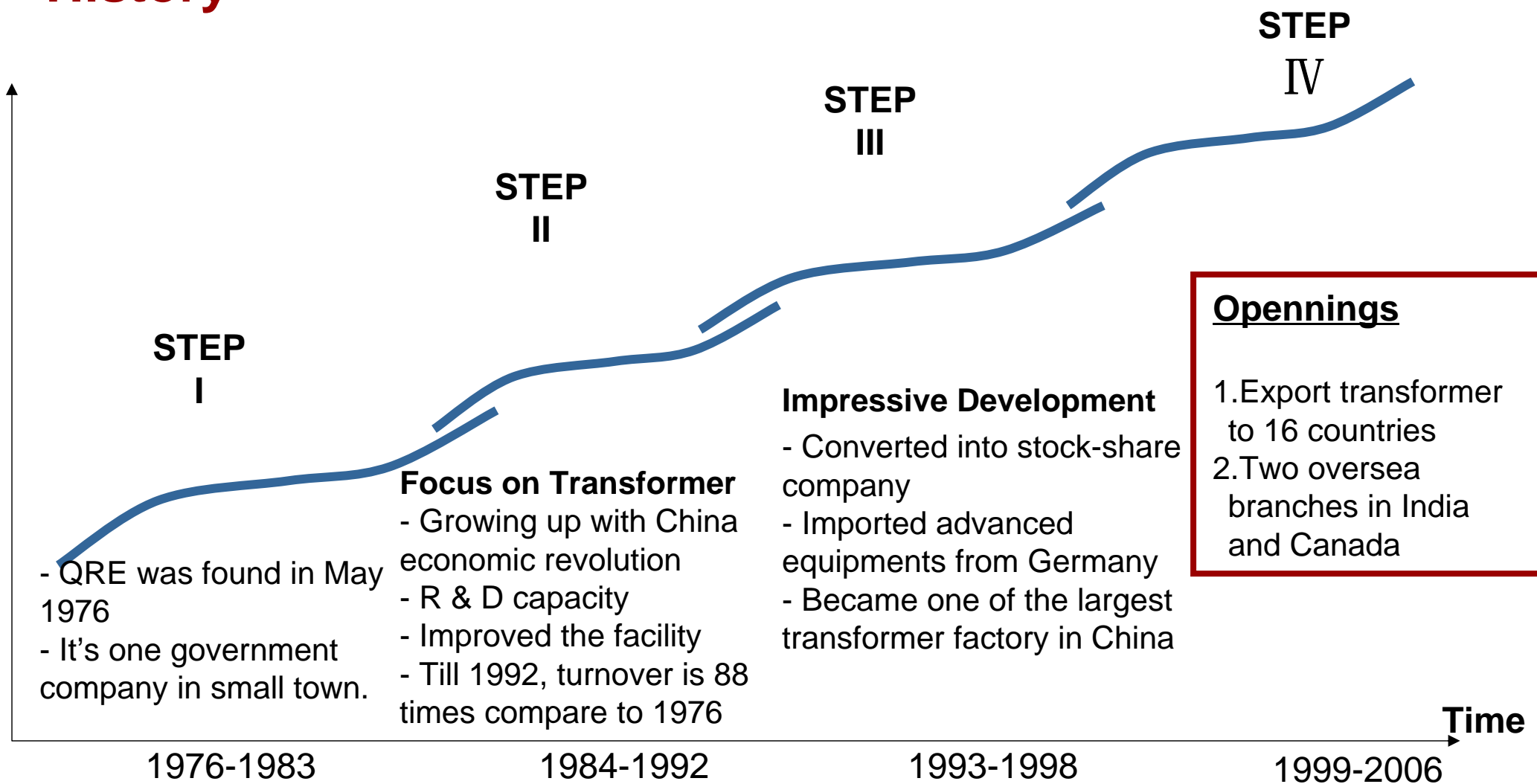




.....since 1976



History



History



- Plants in 1976



- This factory was built In 1980's



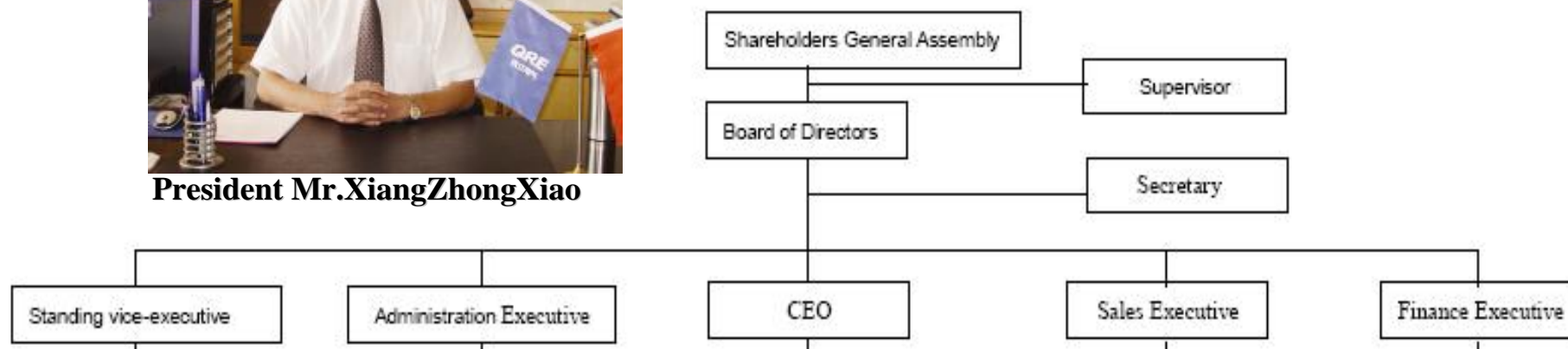
- Now **QRE** has 11 stock-hold companies with the total turnover of **USD140 million** in 2006.

History of Leadership

- In 1976, Mr. Xiang Zhong Xiao and other two people established this company with supporting of China Government.
- In 1984, Mr.Xiang be appointed as GM. There are only 27 workers in this factory. Most of them became the supervisor in QRE.
- From 1993, QRE converted as a stock-share enterprise. There are 1117 employees till now.



President Mr.XiangZhongXiao



History of Technology

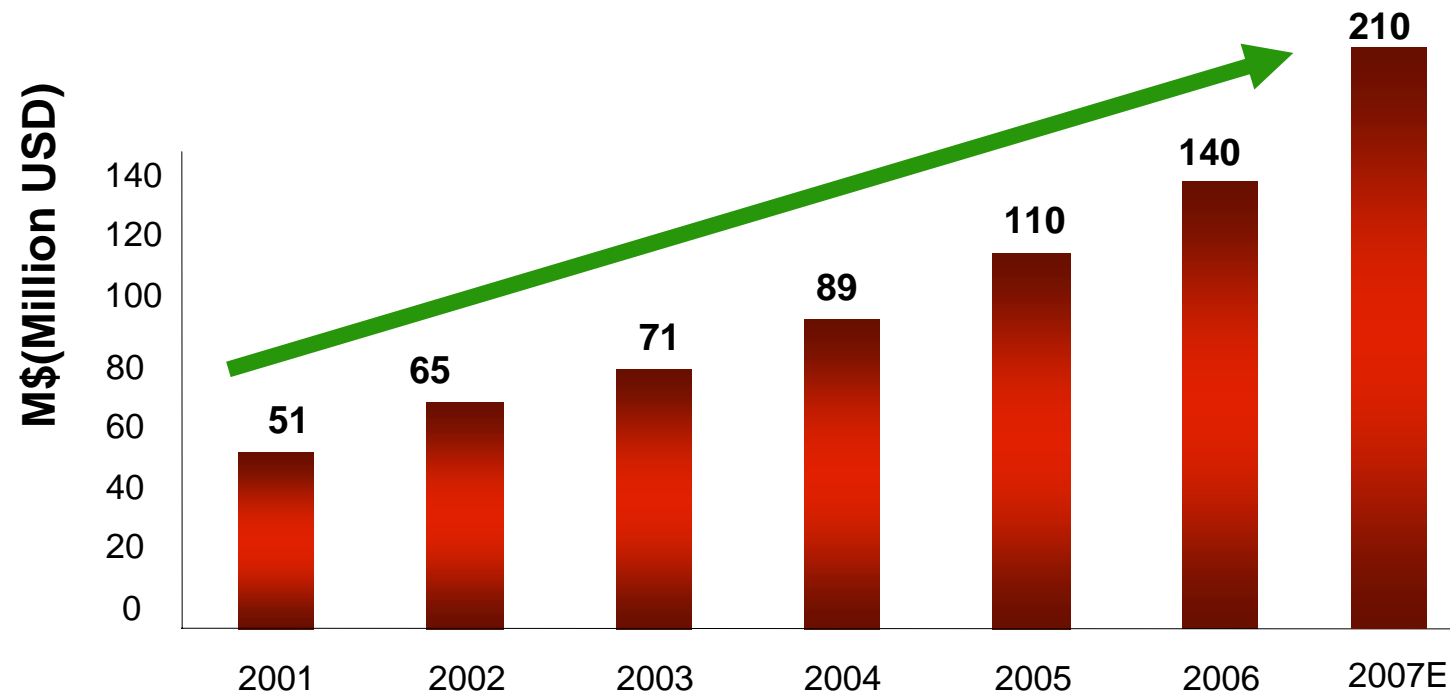


**In 1976, the first transformer
was manufactured**



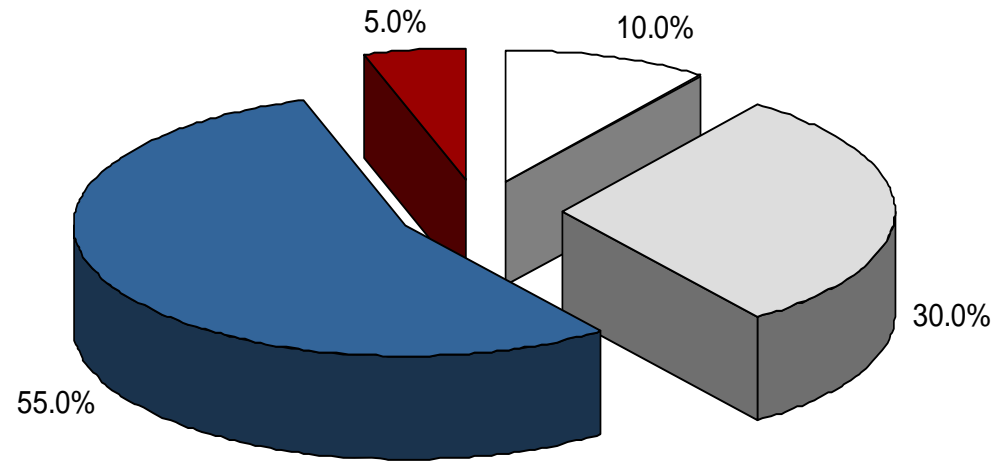
**Till now, QRE's Max Capacity is
360MVA 220kV.**

■ Total Sales in Recent Years



■ Financials

	2006	2005	2004
Assets(Million USD)	139	121	50
Liabilities (Million USD)	91	79	29
Equity (Million USD)	41	37	31
R&D cost(million USD)	7	5.5	4.5
Net Income (Million USD)	10.7	9.5	12.2



- Dry Type Transformer
- Distribution Transformer Upto 35kV
- Power Transformer Upto 220kV
- Compact Substation

Technology and Design

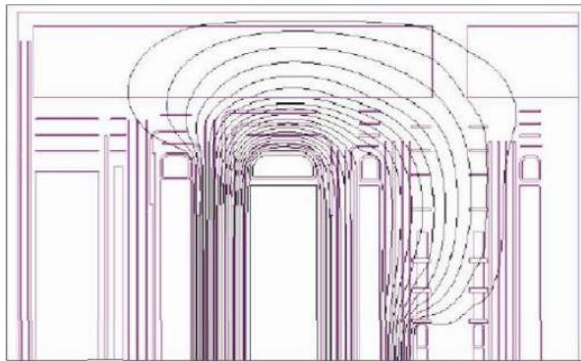


- All possible situations are considered

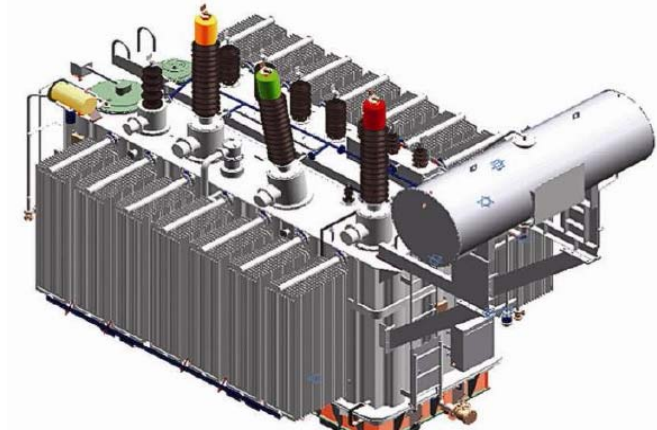
- Design withstands the worst case



- Calculation of forces with advanced **finite elements programs** from Norway
- Use **3D software** design structure



- Electric potential



- 3D assembling

- 1117 members including 88 engineers and 25 technical supervisors
- The main equipments for producing , testing , inspecting are imported from Germany & Japan



Equipments



GEORG line from Germany

Automatic Coil
Machine from
Germany

Core Lamination
Line From
GEORG Germany



Electric-coating assembly



Equipments



Vacuum Resin Casting Machine From Germany



NC cutter from Japan



NC Bender from Japan



Winding Line



Pad-mounted line



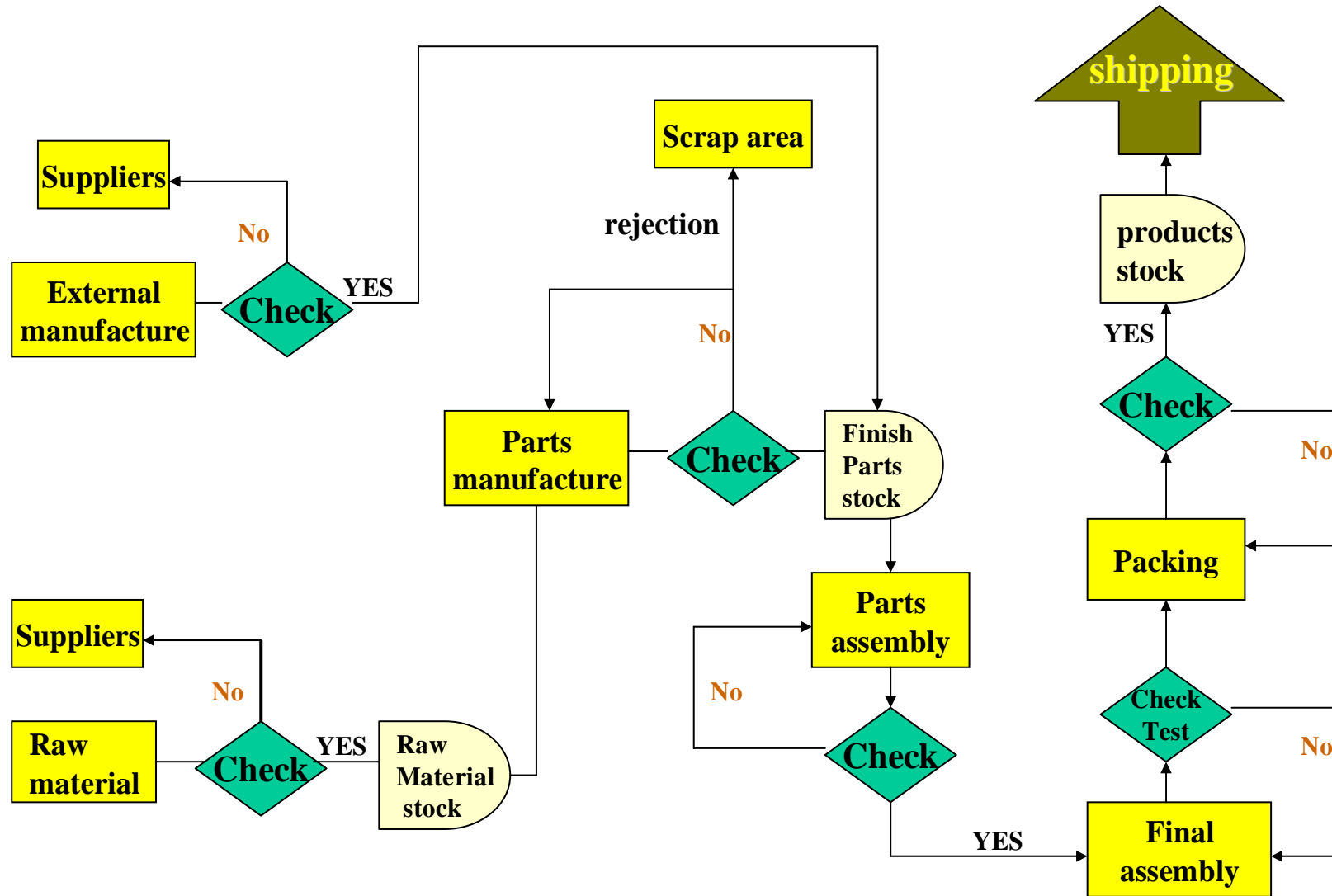
Whole set of equipments for testing include 2400kV impulse voltage generator、 Partial test etc .



- ◆ In May 1996, QRE was the first transformer enterprise in China, which past ISO9002 certification
- ◆ QRE past ISO9001 in 1999.
- ◆ In 2002, We past ISO9001/ISO14001/OHSAS18001 integrative management system certification of 2000 version



Production Program



Name

Supplier

Silicon steel



Copper



OLTC



Oil



Steel



Switch



Name

Supplier

Breaker



Fuse



HV-Arrester



Coating Material

Powder



electrophoresis

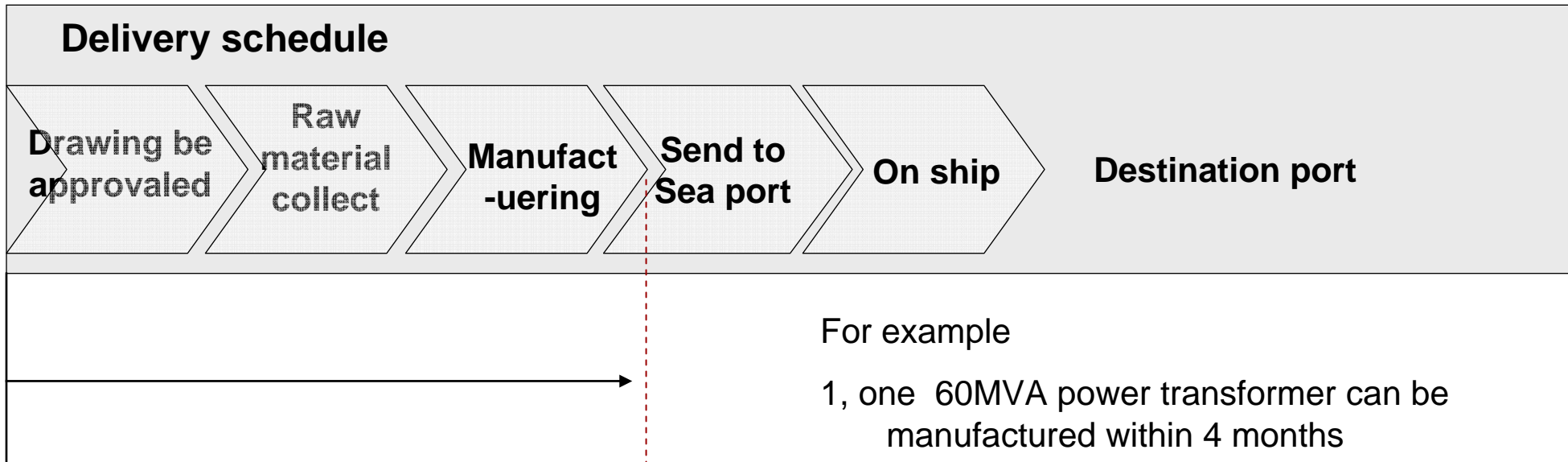


Pre-coating



Delivery

- More than 100 projects be accomplished in 16 countries during last 4 years.



For example

- 1, one 60MVA power transformer can be manufactured within 4 months
- 2, 1MVA distribution transformer can be manufactured within 40 days

- If necessary, we can send goods to the mills by DDP

Global Development

Europe

- ✓ *Italy*
- ✓ *France*
- ✓ *Germany*
- ✓ *Turkey*
- ✓ *Iceland*

South Asia

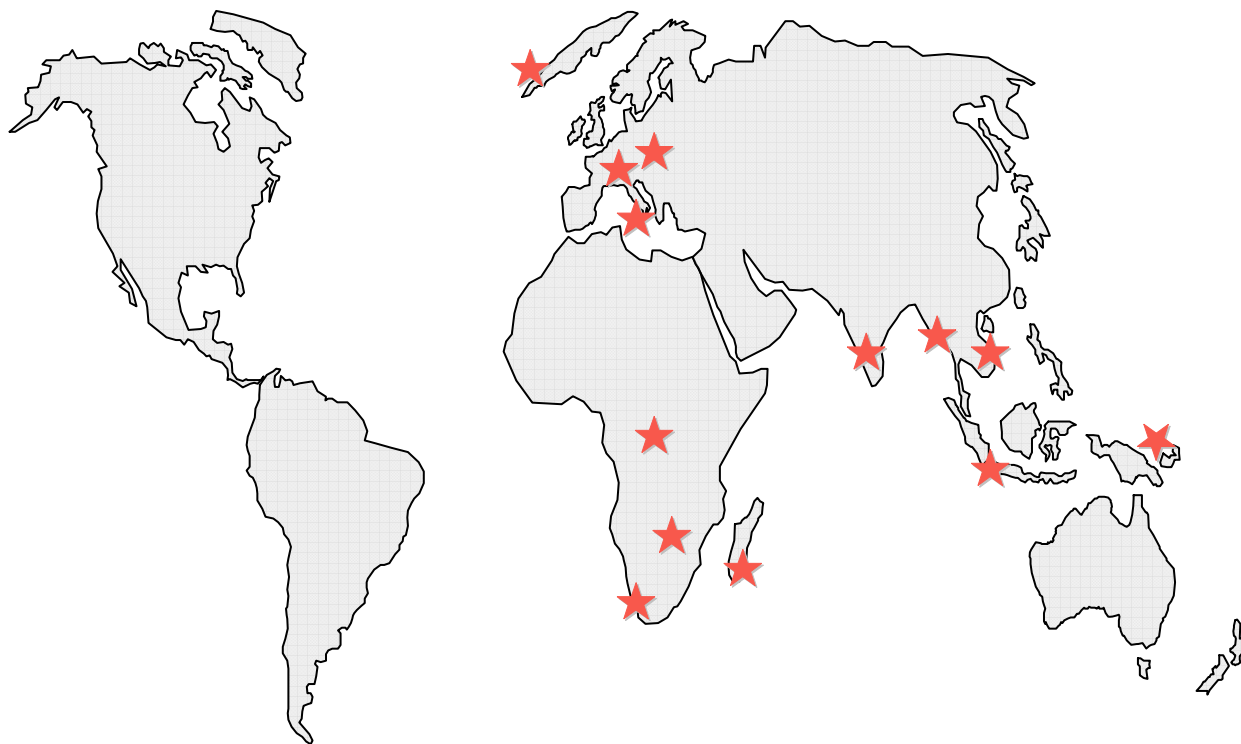
- ✓ *India*
- ✓ *Burma*
- ✓ *Indonesia*
- ✓ *Papua new Guinea*
- ✓ *Malaysia*
- ✓ *Vietnam*

Africa

- ✓ *Nigeria*
- ✓ *South Africa*
- ✓ *Congo*
- ✓ *Kenya*
- ✓ *Madagascar*

⇒ Wide Geographical Presence

⇒ Active presence in more than 16 countries.



Customers

Domestic



上海大众汽车
SHANGHAI VOLKSWAGEN



Europe



VATECH HYDRO

Asia

SIEMENS

RELIANCE

FOXCONN

HIRA
GROUP OF INDUSTRIES



QIANTANG RIVER ELECTRIC GROUP

ADD:Qiantang River Electric Science&Technology
Industrial Zone XiaoShan, HangZhou, China

TEL: +86-571-82583721

FAX: +86-571-82582951

Email: qre@qre.com.cn

Thank You!