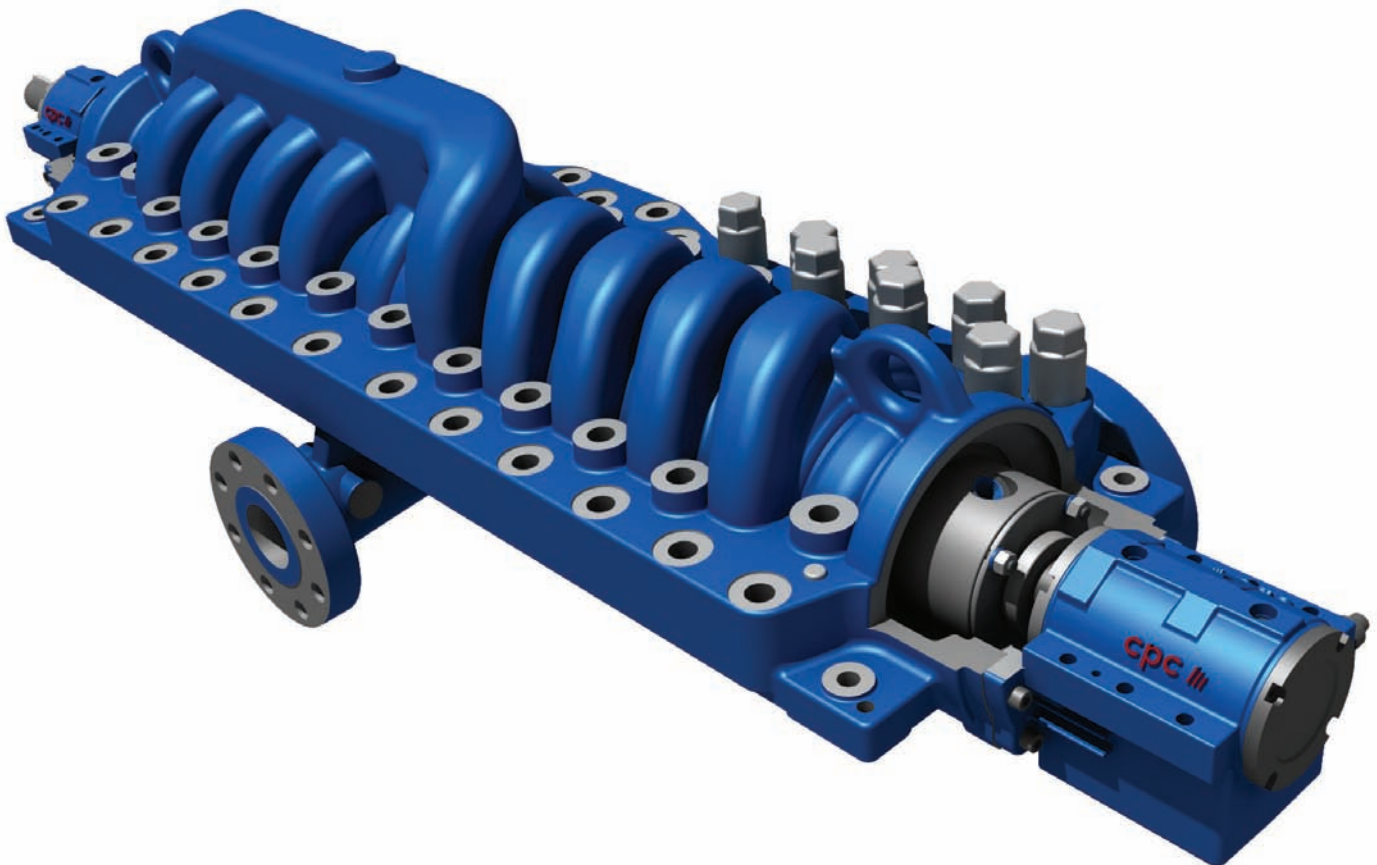


CPC Pumps Model HM / HMD

API 610 / ISO 13709, TYPE BB3
Axially Split Multistage Pump



CPC Pumps Model HM/HMD

Double Volute Construction

- Reduced radial loads for lower shaft deflection and bearing loading

Case Wear Rings

- Tongue register
- Anti-rotation pin used, at split line

Cylindrical or Tapered Shaft Ends

- To meet customer preference

Seal Chamber

- Full compliance with API 682 requirements
- Ample space for dual mechanical seals
- Ease of access for maintenance

Additional Features

Hydraulics

- Wide range of hydraulic performance, optimized for individual applications.
- Impellers staggered for reduced VPF.

Large Diameter Shaft

- Stepped for ease of assembly.
- Optimized for hydraulic performance.

Balance Sleeve

- Individually sized for pressure break down, and axial thrust balance.

Casing

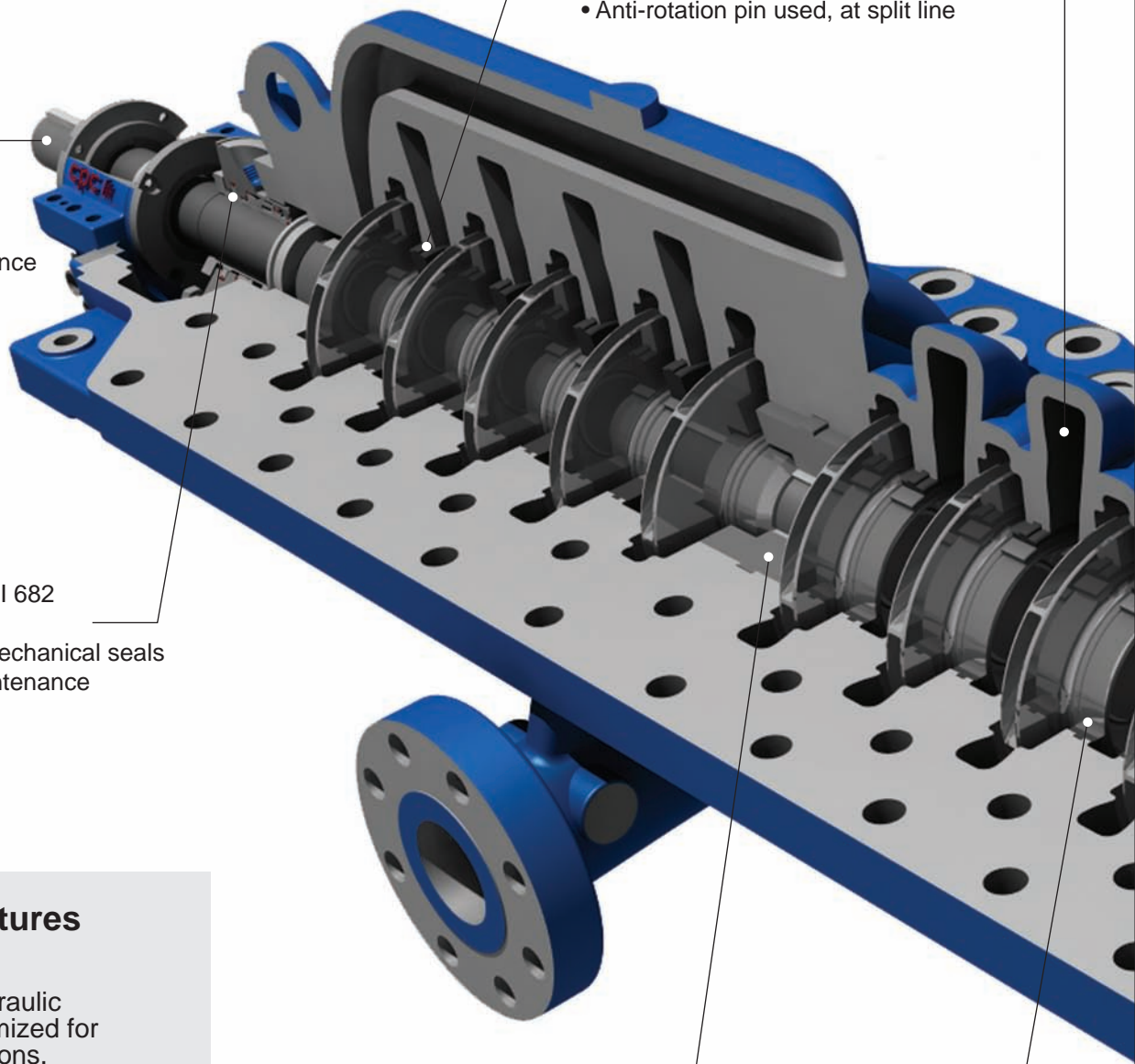
- Mounting dimension and nozzle location same as its predecessor, the respected "United Pump" MSN design.

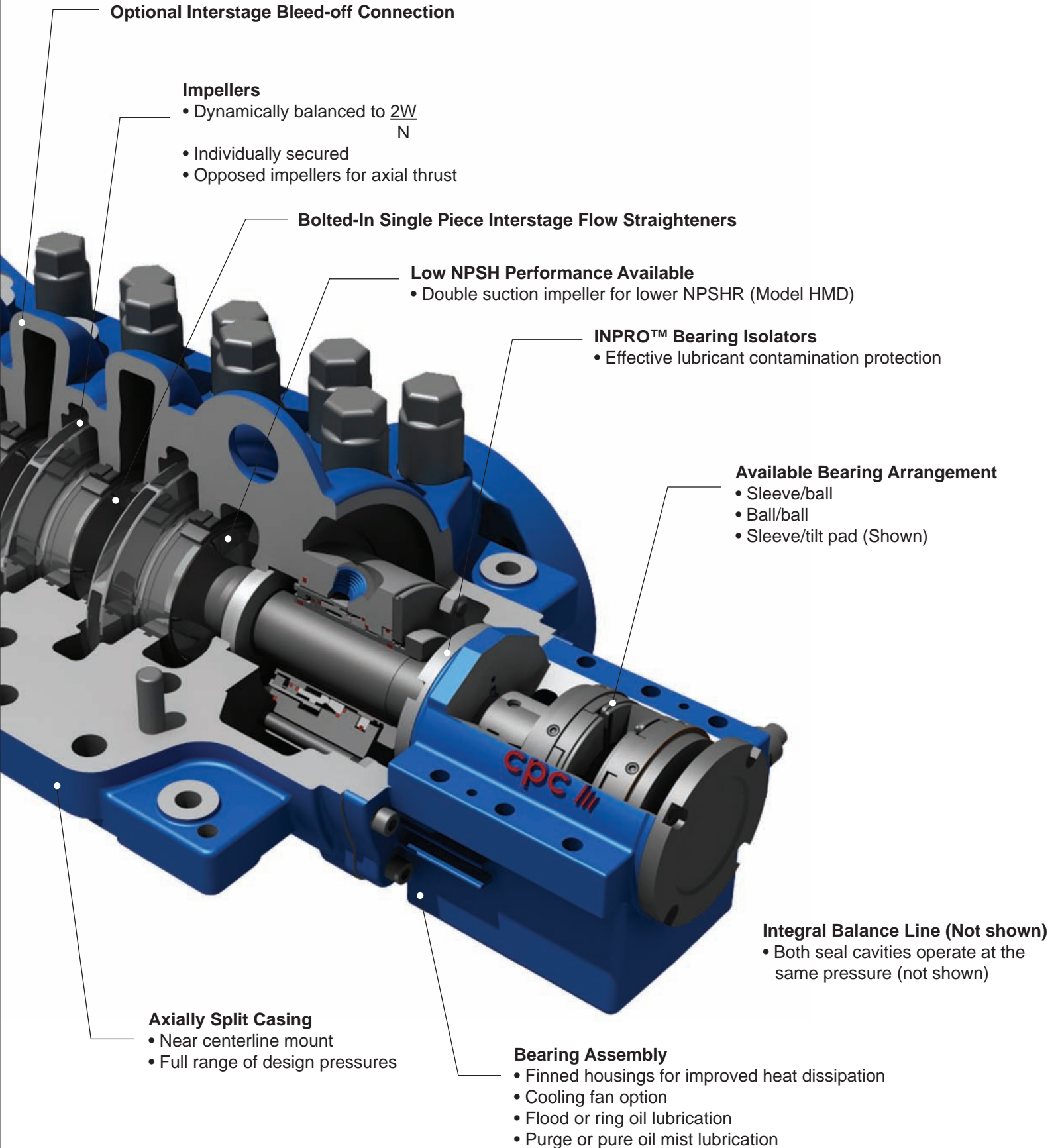
Split Center Bushing

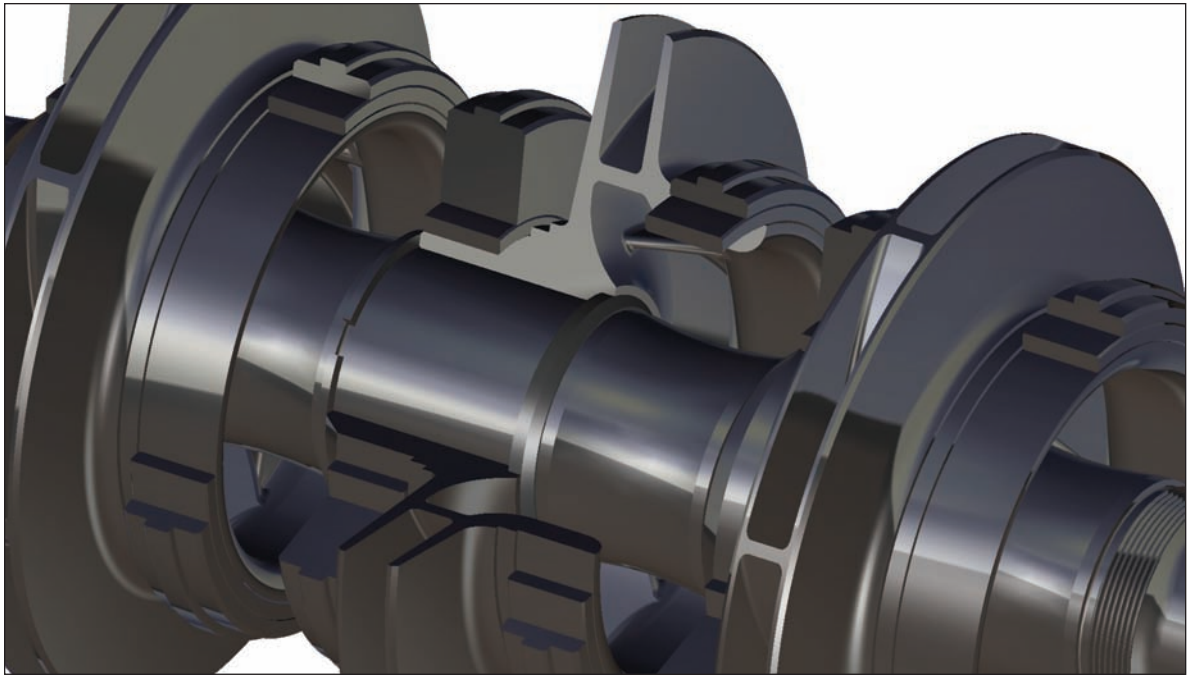
- For ease of inspection, removal and re-installation

Replaceable Impeller Wear Rings

- Optional Integral impeller ring

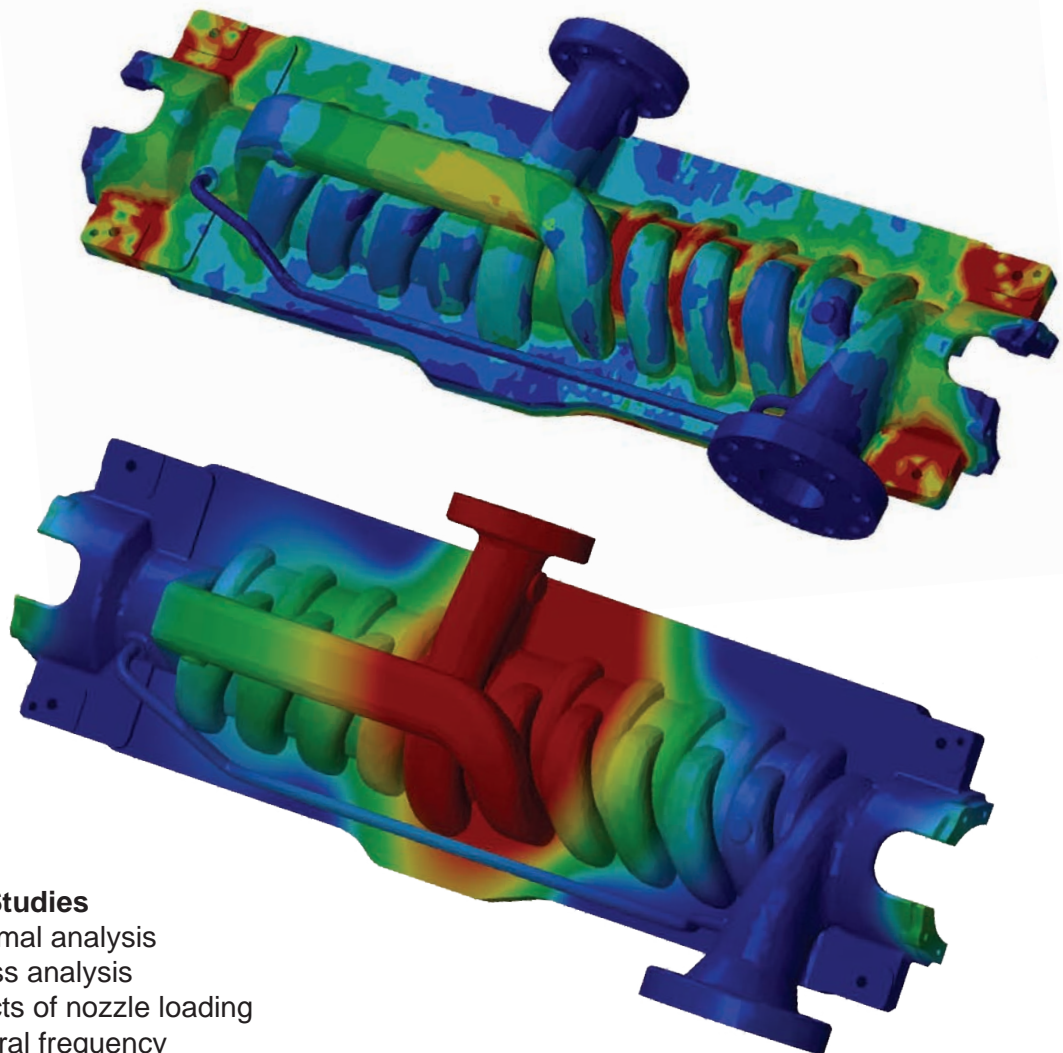






Impeller Retention

- Impellers secured unidirectionally, in the direction of normal thrust
- Impellers secured bidirectionally, if specified (shown)

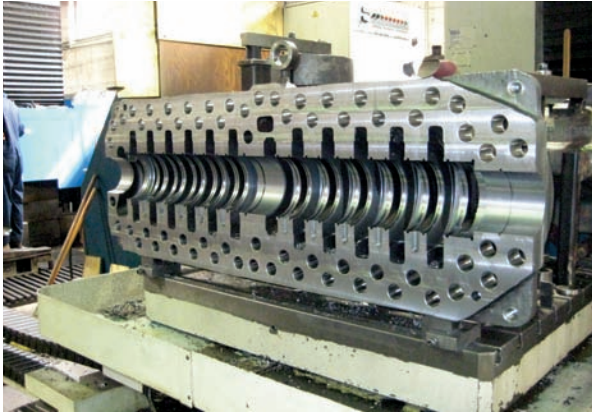


FEA Studies

- Thermal analysis
- Stress analysis
- Effects of nozzle loading
- Natural frequency

Product Capabilities

CPC Pumps has 40+ years experience manufacturing API / ISO centrifugal pumps. Using the most up to date technologies, from manufacturing to assembly and testing, CPC Pumps has what it takes to provide equipment that exceeds industry standards.



HM Pump Case Machining



Wide Hydraulic Coverage



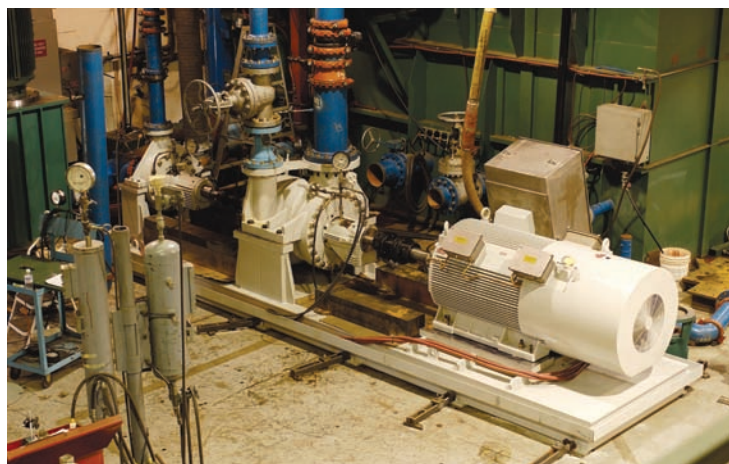
VP-B (OH3) Pump



CNC-Machined Fabricated Impeller



HR (OH2) Pumps - Turbine Driven



H2R (BB2) Pump / Recovery Turbine Drive Train on Test

Sales / Service Locations

■ CANADA

Toronto
Montréal
Calgary
Vancouver

■ USA

Houston, TX
Dallas, TX
Tyler, TX
Alabama
Florida
California
Louisiana
Montana
Wyoming
North Dakota
Washington
Pennsylvania

■ EUROPE / MIDDLE EAST

Contact CPC Pumps International

■ ASIA PACIFIC

Singapore
China
Taiwan
Malaysia
Indonesia
Brunei
India
Pakistan



For these and all other locations please contact

CPC Pumps International at sales@cpcpumps.com
1+905-565-9779 (phone) 1+905-565-5934 (fax)