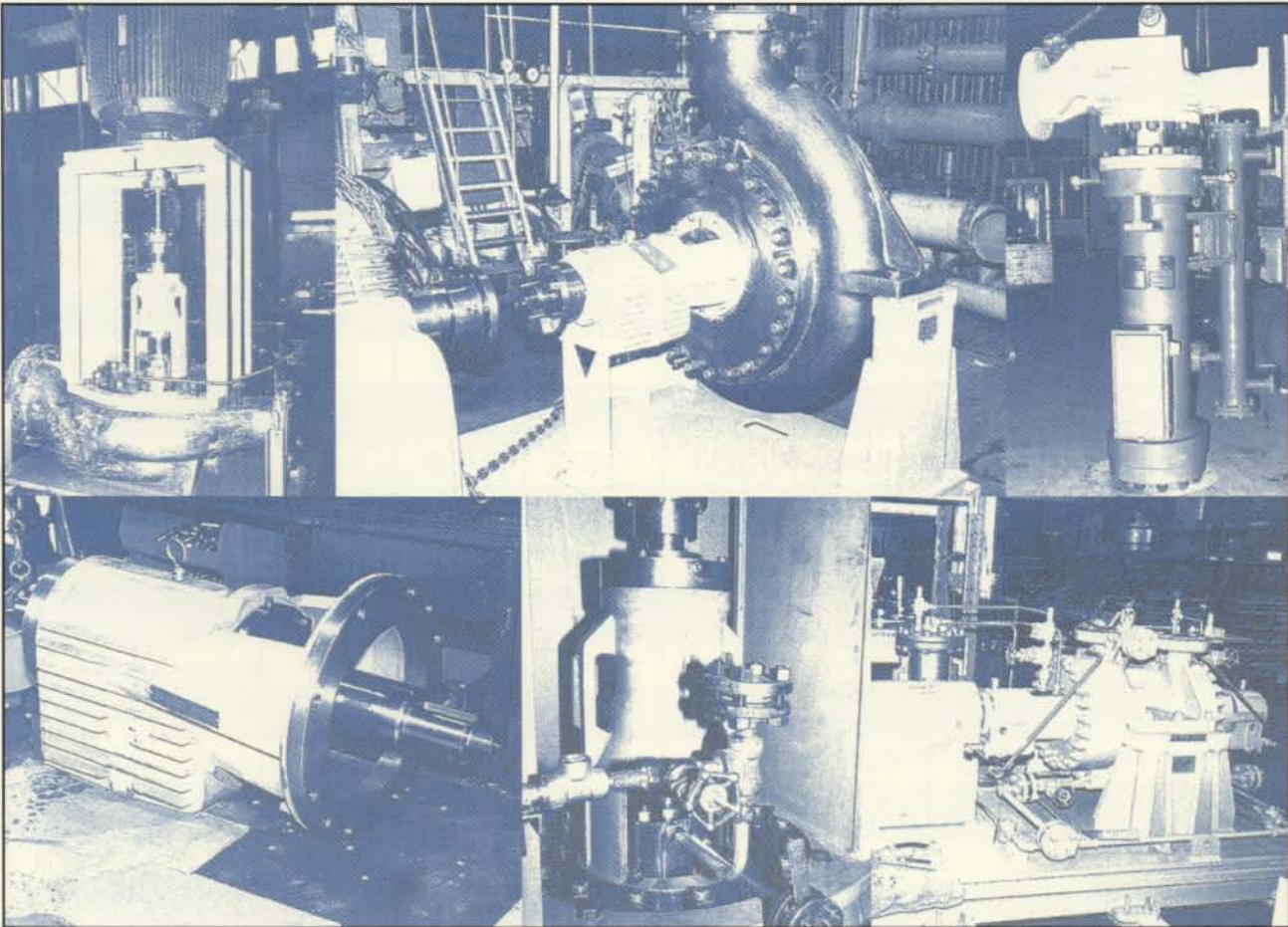




ENGINEERED PROCESS PUMPS



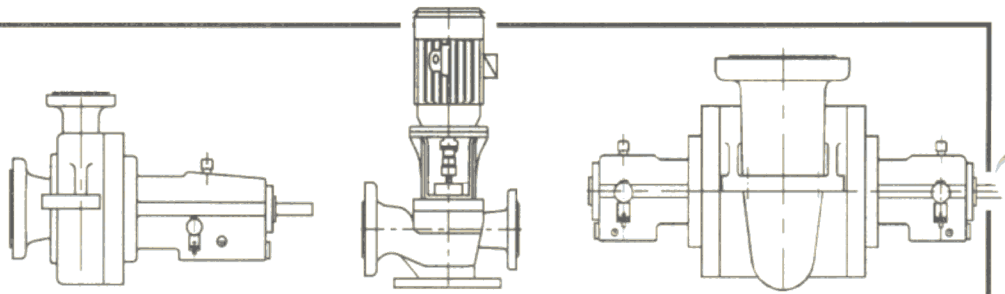
API 610 Type: 0H2 - HR / HOR
0H3 - VP-B
0H4 - VP-C
BB-1 - HDR-S
BB-2 - HDR / H2R

FORMERLY:
united pumps
OF CANADA LTD.

OVERHUNG - BETWEEN BEARING

cpc/Pumps
INTERNATIONAL

AP 610 Radial Split Process Pumps



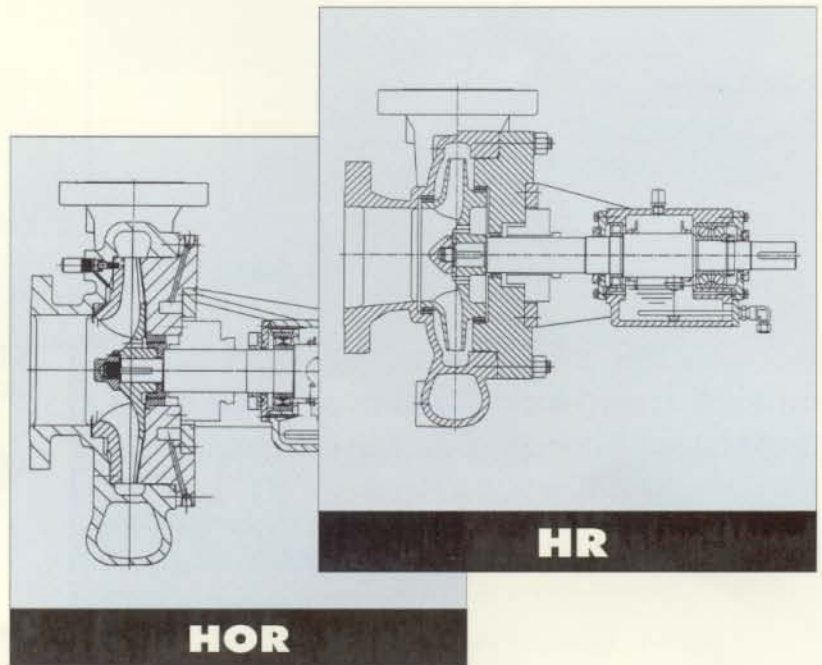
TYPE		OVERHUNG				BETWEEN BEARING			
API CLASSIFICATION		OH2	OH2	OH3	OH4	BB1	BB2	BB2	
CPC MODEL		HR	HOR	VP-B	VP-C	HDR/S	HDR	H2R	
MAX CAPACITY	USGPM	15,000		8,000		15,000		6,200	
	M ³ /Hr	3,400		1,800		3,400		1,400	
MAX HEAD	FEET	1,100		1,100		1,400		2,800	
	M	335		335		425		850	
TEMPERATURE	MAX	°F	800		660	800	400	800	800
		°C	425		350	425	200	425	425
	MIN	°F	-100		-100	-300	-75	-100	-100
		°C	-70		-70	-185	-60	-70	-70
PRESSURE	STANDARD	PSIG	725	725	725	725	600	725	725
		Kpa	5,000	5,000	5,000	5,000	4,100	5,000	5,000
	OPTIONAL	PSIG	1,450	1,450	2,175	2,175	725	1,450	1,450
		Kpa	10,000	10,000	15,000	15,000	5,000	10,000	10,000
CASE MOUNTING	FOOT					✓			
	INLINE			✓	✓				
	CENTERLINE	✓	✓				✓	✓	
SHAFT MOUNTING	HORIZONTAL	✓	✓			✓	✓	✓	
	VERTICAL			✓	✓				
SUCTION TYPE	SINGLE	✓	✓	✓	✓			✓	
	DOUBLE					✓	✓	✓	
IMPELLER STAGES	SINGLE	✓	✓	✓	✓	✓	✓		
	TWO STAGE							✓	
IMPELLER TYPE	CLOSED	✓		✓	✓	✓	✓	✓	
	OPEN		✓						
NOZZLE LOCATION	END / TOP	✓	✓						
	SIDE / SIDE			✓	✓	✓			
	TOP / TOP	✓	✓				✓	✓	
COUPLING	FLEXIBLE SPACER	✓	✓	✓		✓	✓	✓	
	RIGID SPACER				✓				
CASE SPLIT	RADIAL	✓	✓	✓	✓	✓	✓	✓	

OVERHUNG PUMPS

Horizontal - Centerline Mounted

HR - Single suction, center-line mounted process pump for refinery service.

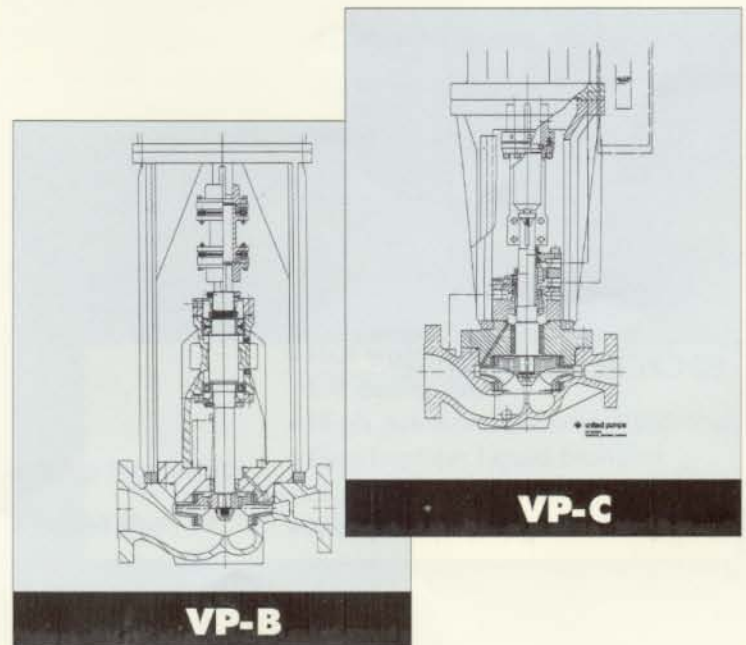
HOR - An adaptation of the HR for applications requiring an open, non-clog impeller design, such as slurry and coke crusher services.



Vertical - In-line Mounted

VP-B - Single suction, in-line mounted process pumps for refinery services where a separate pump bearing housing is required.

VP-C - "THE" in-line pump for all services where space is limited and piping configuration and accessibility for maintenance are important.

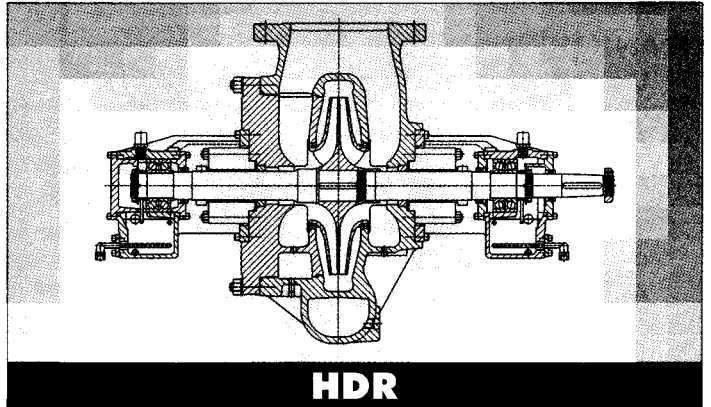


BETWEEN BEARING PUMPS

Single Stage

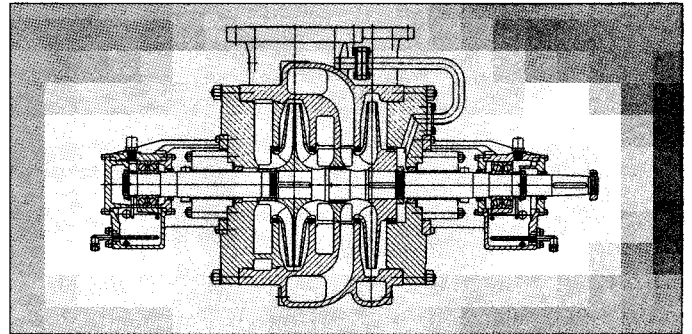
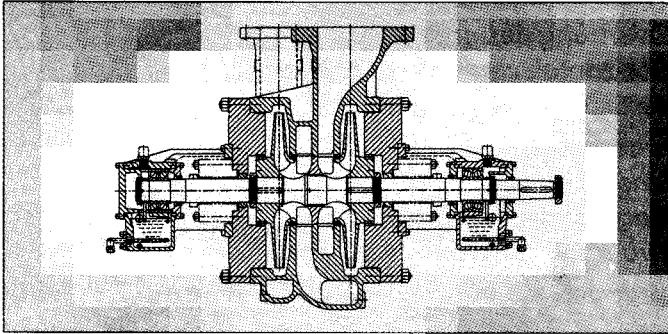
HDR - Double suction, centerline mounted pumps designed for high temperatures and pressures with top/top nozzles.

HDR/S - Double suction, designed for low to moderate temperatures and pressures with side/side nozzles.



Two Stage

H2R - Two stage, center line mounted pumps designed for high temperature services requiring differential head beyond the capabilities of single stage pumps.



Bearing Housings

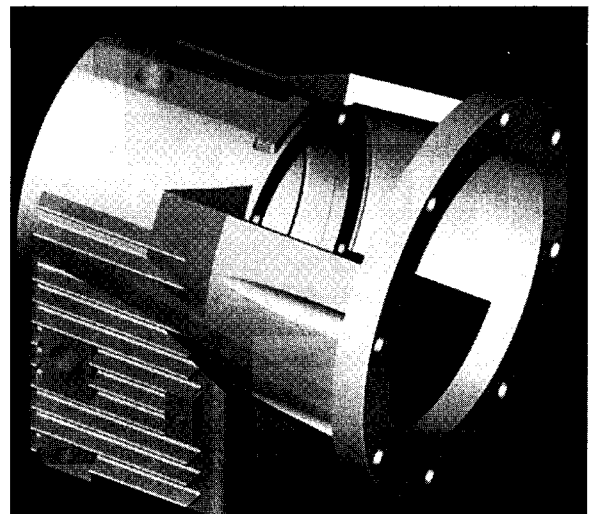
All **CPC/Pumps** bearing housings are mounted with a full 360° fit directly onto the case or cover without intermediate spacers. This 360° fit guarantees proper alignment every time and reduces vibration.

Bearings are oil ring lubricated with duplex anti-friction radial and thrust as standard.

Optional bearing arrangements are:

Sleeve radial/duplex thrust bearing.

Sleeve radial/tilting - pad thrust bearing.



OUR COMPANY

is an independent company specializing in the design, manufacturing, testing and servicing of engineered, heavy duty process pumps to customer's specifications.

THEN AND NOW

- 1957 **United Pumps of Canada** signs its first license agreement with United Centrifugal Pumps.
- 1990 **United Pumps of Canada** embarks on an extensive redesign program to bring all pump lines into full compliance with API 610 and opens its' first foreign sales office.
- 1997 **United Pumps of Canada** moves into a larger manufacturing and test facility to keep pace with increased sales. **United Pumps of Canada** terminates its' license agreement and celebrates the event by changing its name to:



CPC/Pumps continues to be an independent company specializing in the design, manufacturing, testing and servicing of engineered, heavy duty process pumps.

OUR MARKETS

CPC/Pumps are pumping successfully in these API processes:

- Crude Oil Transfer
- Pipeline boosting
- Liquid sulphur transfer
- Water disposal
- Crude oil charging
- General and special refinery services
- Hot asphalt transfer
- Vacuum tower bottoms
- H.F. acid service
- Truck loading in marketing terminals

CPC/Pumps are manufactured in metallurgy to meet the service requirements and customer specifications.

Pumps in API S-1 through A-8 as well as specialty cast metal can be provided. Our experience includes:

- Duplex stainless steel
- Hastalloy
- Monel cladding
- Hard facing (TMT, etc.)
- Titanium
- Ni-A1 Bronze



OUR PRODUCT

CPC/Pumps concentrates on providing the H.C. Process industries with radial split single and multi-stage pumps meeting the latest requirements of the American Petroleum Institute Specification API 610, ASME code, as well as customer specifications.

Our product range consists of:

- Overhung design, single stage.
- Horizontal, centerline mounted.
- Vertical in-line mounted.

Between bearing design -

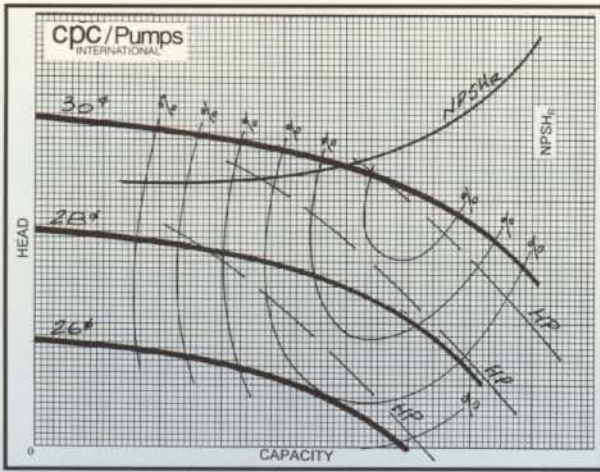
- Single stage, centerline mounted.
- Single stage, foot mounted.
- Two stage centerline mounted.

Each product line consists of sufficient sizes to meet the hydraulic requirement of our customers. Our can-do attitude insures that our pumps meet all specifications for the variety of services **CPC/Pumps** are expected to operate in.

Heavy duty CPC/Pumps for non-API services:

- Hot water boiler circulation
- L.P. boiler feed
- High pressure chemical services
- Gasification liquid transfer
- Liquid sulphur disposal/transfer
- Mine dewatering

CPC/Pumps
INTERNATIONAL



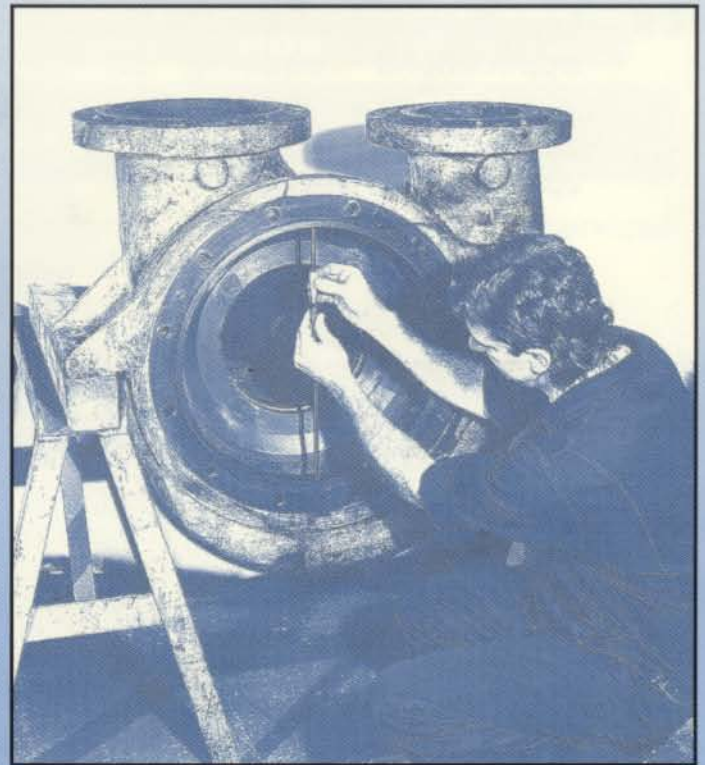
After sales support is provided to our customers through co-ordination of local service centers with the customer, engineering, production and parts departments.

Services offered include:

- Rebuild/Overhaul
- Upgrades/Conversions
- Contract Maintenance
- Field Service

Sales and application engineering to our customers is provided at the local level through a network of trained, dedicated professionals located in these cities:

- Baton Rouge, Louisiana, USA
- Calgary, Alberta, Canada
- Dallas, Texas, USA
- Houston, Texas, USA
- London, UK
- Singapore
- Seoul, Korea
- Taipei, Taiwan, ROC
- Toronto, Ontario, Canada
- Tyler, Texas, USA
- Vancouver, British Columbia, Canada



Service Centers are located in:

- Alberta, Canada
- Ontario, Canada
- Singapore
- Texas, USA

LOCAL REPRESENTATIVE:

cpc/Pumps
INTERNATIONAL

TORONTO • ONTARIO • CANADA • Tel: (905) 564-9202 • Fax: (905) 564-7844